



# GAT MONTHLY MEMBERSHIP PROGRESS REPORT

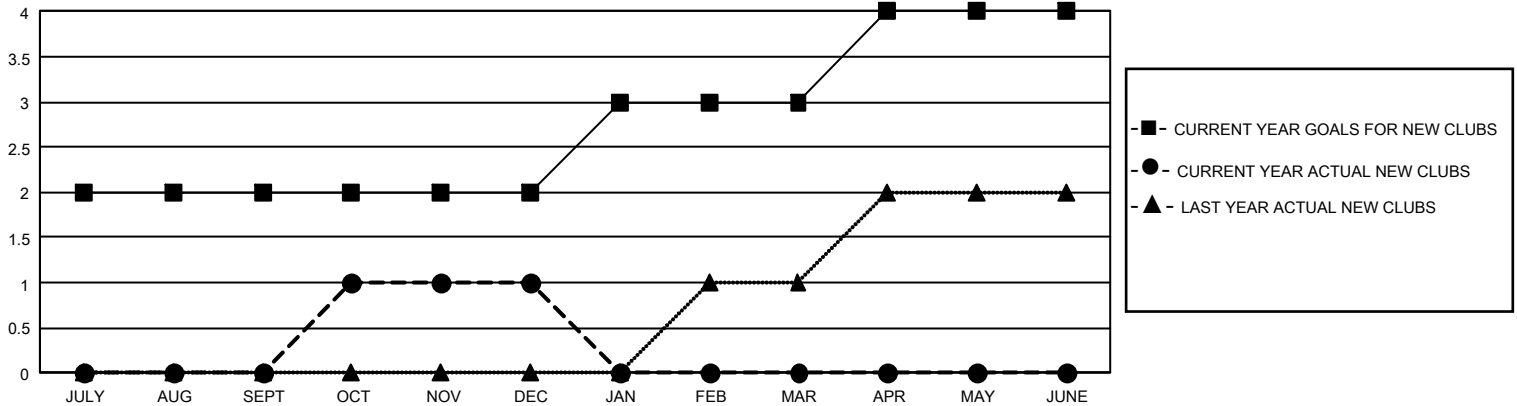
Results as of: 12/31/2025

## GMT Constitutional Area 8, Group C

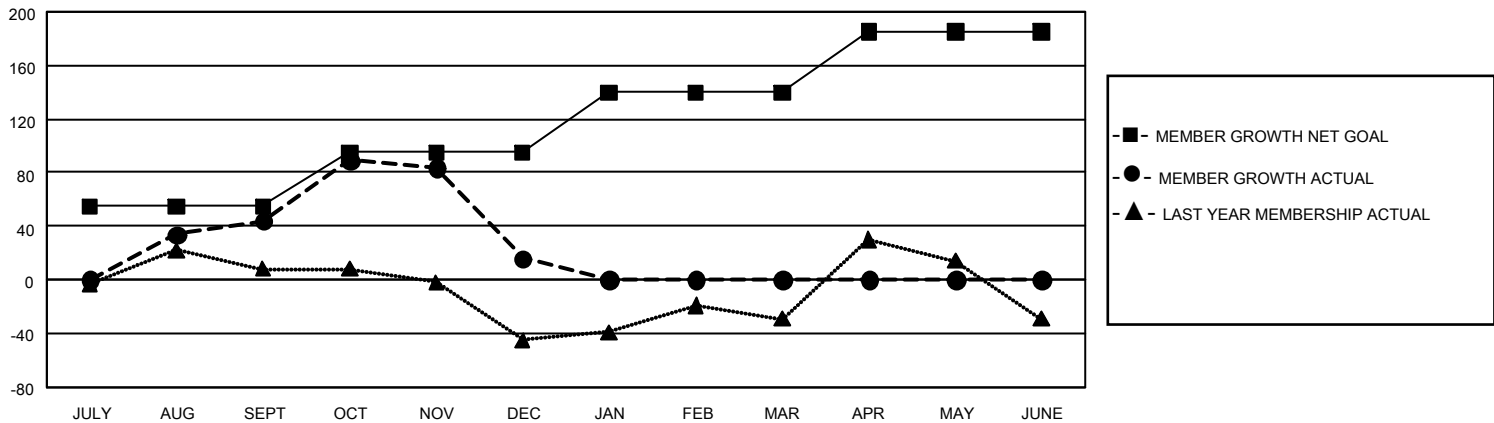
REPORT DOES NOT INCLUDE CLUBS IN UNDISTRICTED AREAS.

Clubs				Members			
RESULTS FOR 2025-2026				RESULTS FOR 2025-2026			
QUARTER	NEW CLUB GOAL	NEW CLUBS	DROPPED CLUBS	QUARTER	MEMBER GROWTH NET GOAL	MEMBER GROWTH ACTUAL	DROPPED MEMBERS ACTUAL (including transfers)
JULY/AUG/SEPT	6	0	0	JULY/AUG/SEPT	55	100	39
OCT/NOV/DEC	0	1	1	OCT/NOV/DEC	40	98	120
JAN/FEB/MAR	3	0	0	JAN/FEB/MAR	45	0	0
APR/MAY/JUNE	3	0	0	APR/MAY/JUNE	45	0	0

GOALS AND ACTUAL NEW CLUBS CUMULATIVE



GOALS AND ACTUAL MEMBERS CUMULATIVE



DROPPED CLUBS: 1

54 CLUBS OF 116 ADDED 1 OR MORE NEW MEMBERS

### GENDER DISTRIBUTION

MALE	875 (49.63%)
FEMALE	887 (50.31%)
NON BINARY	1 (0.06%)
PREFER NOT TO ANSWER	0 (0.00%)

### DROPPED MEMBERS

DECEASED	10
CLUB CANCELLED	17
OTHER	132
TOTAL	159

[CLICK HERE FOR CUMULATIVE MEMBERSHIP DATA](#)

TOTAL FAMILY UNIT MEMBERS	480
FAMILY MEMBERS PAYING HALF DUES	251